

HUNGER HILL CL

Lindens Farm, Riby, Grimsby DN37 8NQ

Claire 07801 249938/Sally 07711 406363

The Vergette family would like to welcome you to Hunger Hill CL Site. We have listed below information about the site you may find helpful.

This leaflet has been adapted during this difficult time to give you a little more information about payment etc.

For additional information please contact one of us by phone and we will do what we can to help. Ring Claire on 07801 249938, Sally on 07711 406363 or Peter on 07860 644533.

Please do follow government guidelines and NHS hand washing advice by regularly washing your hands and keeping a safe distance from other campers.

If you have any concerns at all regarding your health please call the NHS 111 helpline. If you need to self-isolate due to any symptoms you may have please let us know as soon as possible. The advice is to go home immediately. If this is not possible you will be asked to self isolate on site.

What you will find: 5 level hard standing pitches with **10 amp electric** points—to connect put in plug and turn from 12 o'clock to 2 o'clock; to disconnect turn from 2 o'clock to 12 o'clock and remove plug. If you trip the electric please reset the trip in the kiosk on the wall. For wattage appliance details see sheet in kiosk.

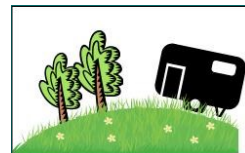
Service area with drinking water, grey water disposal, chemical disposal point and bins—one for recycling and one for all other items. Please see attached leaflet or inside kiosk for details on bins. A light will come on from dusk to dawn in the winter. *Please note there is no Portable Toilet at present.* **PLEASE WASH YOUR HANDS AFTER USING THIS AREA**

Information Kiosk— leaflets, map, bus timetable, menu file, DVD's & Books etc to make your stay more enjoyable. **PLEASE WASH YOUR HANDS AFTER USING THIS AREA.**

Payment— If you do not wish any personal contact with us we suggest you pay the remaining pitch fees either by card, cash in the safe in the kiosk or by bank transfer—details on request. If you wish to pay by card please request an email link to our FabPay payment system—this is very easy if you paid the deposit online.

Dog Walk into Hunger Hill Wood (please note this wood has hazards ie fallen tree branches, rabbit holes and stumps etc).

Pets: Please keep your dog on a lead at all times within the site and clean up after them. Dispose of waste in Black Rubbish Bin in service area please. Dog Walk leads into wood.



HUNGER HILL CL

Lindens Farm, Riby, Grimsby DN37 8NQ

Claire 07801 249938/Sally 07711 406363

The Vergette family would like to welcome you to Hunger Hill CL Site. We have listed below information about the site you may find helpful.

This leaflet has been adapted during this difficult time to give you a little more information about payment etc.

For additional information please contact one of us by phone and we will do what we can to help. Ring Claire on 07801 249938, Sally on 07711 406363 or Peter on 07860 644533.

Please do follow government guidelines and NHS hand washing advice by regularly washing your hands and keeping a safe distance from other campers.

If you have any concerns at all regarding your health please call the NHS 111 helpline. If you need to self-isolate due to any symptoms you may have please let us know as soon as possible. The advice is to go home immediately. If this is not possible you will be asked to self isolate on site.

What you will find: 5 level hard standing pitches with **10 amp electric** points—to connect put in plug and turn from 12 o'clock to 2 o'clock; to disconnect turn from 2 o'clock to 12 o'clock and remove plug. If you trip the electric please reset the trip in the kiosk on the wall. For wattage appliance details see sheet in kiosk.

Service area with drinking water, grey water disposal, chemical disposal point and bins—one for recycling and one for all other items. Please see attached leaflet or inside kiosk for details on bins. A light will come on from dusk to dawn in the winter. *Please note there is no Portable Toilet at present.* **PLEASE WASH YOUR HANDS AFTER USING THIS AREA**

Information Kiosk— leaflets, map, bus timetable, menu file, DVD's & Books etc to make your stay more enjoyable. **PLEASE WASH YOUR HANDS AFTER USING THIS AREA.**

Payment— If you do not wish any personal contact with us we suggest you pay the remaining pitch fees either by card, cash in the safe in the kiosk or by bank transfer—details on request. If you wish to pay by card please request an email link to our FabPay payment system—this is very easy if you paid the deposit online.

Dog Walk into Hunger Hill Wood (please note this wood has hazards ie fallen tree branches, rabbit holes and stumps etc).

Pets: Please keep your dog on a lead at all times within the site and clean up after them. Dispose of waste in Black Rubbish Bin in service area please. Dog Walk leads into wood.

Adventure Play Area—Closed due to COVID 19.

Hunger Hill Wood—Tree, Creature & Treasure Trail—sheets in the kiosk.

Gruffalo Wood *The Gruffalo and Friends are back in the wood for you to find. The Spotters Leaflet is in the Information Kiosk.*

Farm Walk—map in the information kiosk, *ground can be rough* in areas.

SEE MAP hanging up in kiosk window.

All walks can be combined and reversed. **Blue Walk** out of Caravan Site over bridge.

Pink Walk Inc Gruffalo Wood (Gruffalo Trail April-Sept) **Green Walk** through yard and back through Hunger Hill Wood. Uneven ground, nettles etc so trousers and suitable shoes recommended .

Visitors Car Park. Visitors: Please ask visitors to park in Visitors Car Park.

TV good & Mobile phone reception good.

Wi-Fi internet access on site—variable. CL Site Ext.Password: hungerhill

Large wildlife pond adjacent—*BEWARE* deep water.

Lindens Farm Yard—this is a busy place with lorries and fork lifts working. You are welcome to walk through but be aware of vehicles.

On the farm you will find a *Microlight Strip and a Model Aircraft Club*—these areas are open to visitors but be aware aircraft can be dangerous please approach from the track side to watch not down the grass runway.

Pitch care: If wet and signs out—no Caravans or awnings on the grass

BBQ's: Please keep BBQ's off the grass.

Gas bottles—Bob Clark, Calor Shop,159 Hainton Ave, Grimsby DN32 9LF 01472 240601 See note in kiosk.

REVIEWS: Please leave reviews on the CAMC site and our Facebook Page.

FACEBOOK PAGE —www.facebook.com/hungerhillcl—please visit and share.

Supermarkets: If you wish to arrange an on-line supermarket delivery here at Hunger Hill CL our address is Hunger Hill CL, Lindens Farm, Riby, Grimsby DN37 8NQ remember to provide delivery instructions along with your order.

Spar 8am till 9pm Keelby (PO) Laceby Roundabout Fuel also (2.8 miles)

Morrisons, Laceby DN37 7SQ (4.7 miles) , The Lincoln Coop, 16 High St, Caistor, Sainsbury's, Corporation Rd, Grimsby DN31 1UF (6.5 miles) Tesco Extra, Victoria Street, Grimsby DN31 1QS

Take Aways: The Chip Inn, Keelby 01469 561147, Micks Plaice, Laceby 01472 872472, Chinese Laceby 01472 750392

Hospital A & E Diana Princess of Wales Hospital, Scartho Road, Grimsby DN33 2BA Tel: 01472 874111

Prescriptions Pharmacy Immingham Medical Centre & Lloyds Pharmacy 01469 572058 Lloyds 8 Caistor Road, Laceby DN37 7HX 01472 753375

Adventure Play Area—Closed due to COVID 19.

Hunger Hill Wood—Tree, Creature & Treasure Trail—sheets in the kiosk.

Gruffalo Wood *The Gruffalo and Friends are back in the wood for you to find. The Spotters Leaflet is in the Information Kiosk.*

Farm Walk—map in the information kiosk, *ground can be rough* in areas.

SEE MAP hanging up in kiosk window.

All walks can be combined and reversed. **Blue Walk** out of Caravan Site over bridge.

Pink Walk Inc Gruffalo Wood (Gruffalo Trail April-Sept) **Green Walk** through yard and back through Hunger Hill Wood. Uneven ground, nettles etc so trousers and suitable shoes recommended .

Visitors Car Park. Visitors: Please ask visitors to park in Visitors Car Park.

TV good & Mobile phone reception good.

Wi-Fi internet access on site—variable. CL Site Ext.Password: hungerhill

Large wildlife pond adjacent—*BEWARE* deep water.

Lindens Farm Yard—this is a busy place with lorries and fork lifts working. You are welcome to walk through but be aware of vehicles.

On the farm you will find a *Microlight Strip and a Model Aircraft Club*—these areas are open to visitors but be aware aircraft can be dangerous please approach from the track side to watch not down the grass runway.

Pitch care: If wet and signs out—no Caravans or awnings on the grass

BBQ's: Please keep BBQ's off the grass.

Gas bottles—Bob Clark, Calor Shop,159 Hainton Ave, Grimsby DN32 9LF 01472 240601 See note in kiosk.

REVIEWS: Please leave reviews on the CAMC site and our Facebook Page.

FACEBOOK PAGE —www.facebook.com/hungerhillcl—please visit and share.

Supermarkets: If you wish to arrange an on-line supermarket delivery here at Hunger Hill CL our address is Hunger Hill CL, Lindens Farm, Riby, Grimsby DN37 8NQ remember to provide delivery instructions along with your order.

Spar 8am till 9pm Keelby (PO) Laceby Roundabout Fuel also (2.8 miles)

Morrisons, Laceby DN37 7SQ (4.7 miles) , The Lincoln Coop, 16 High St, Caistor, Sainsbury's, Corporation Rd, Grimsby DN31 1UF (6.5 miles) Tesco Extra, Victoria Street, Grimsby DN31 1QS

Take Aways: The Chip Inn, Keelby 01469 561147, Micks Plaice, Laceby 01472 872472, Chinese Laceby 01472 750392

Hospital A & E Diana Princess of Wales Hospital, Scartho Road, Grimsby DN33 2BA Tel: 01472 874111

Prescriptions Pharmacy Immingham Medical Centre & Lloyds Pharmacy 01469 572058 Lloyds 8 Caistor Road, Laceby DN37 7HX 01472 753375